

**Quality Education Nepal Inc.**



29 Blue Mount Road, Trentham, Victoria 3458, Australia  
Association No.: A0054301J ABN: 79 892 132 355

Registered as a Public Benevolent Institution by the Australian Charities and Not-for-profits Commission  
Donations over \$2.00 are tax deductible – pay to BSB 633-000, a/c 149716235, confirm by email.

**Administrator of Rotary Australia World Community Service Project 43 / 2009-10**

Board: Peter Hall Ronda Hall Simon Cowen  
Don Cullen Michael Dillon  
George Hillary Gordon Nightingale

Web site: [www.nepalaid.org.au](http://www.nepalaid.org.au)  
Email: [nepalaid@gmail.com](mailto:nepalaid@gmail.com)  
Phone: +61 3 5424 1453

**Newsletter No. 7 – June 2017**

**Great News - Rotary Foundation Global Grant**

In March we received news that after fifteen months of negotiation with sponsor Clubs, Districts and The Rotary Foundation, our application for a Global Grant had been successful. A project budget of US\$74,400 had been approved to train 75 teachers over three years - 50 days of training per teacher.

We lost no time in getting the project under way with the delivery of the first 10-day Basic Training program for the Tatopani Resource Centre, April 9-18. I was able to attend the Closing Ceremony - the only Rotarian to do so. KB Shahi, Project Manager on behalf of the Rotary Club of Baglung, was delayed on his way to the Opening Ceremony by a traffic accident, arriving after it ended. So I was pleased to uphold Rotary in this great initiative.



A teacher admires her origami creation



Teaching materials assembled for distribution



Trainers and officials at the Closing Ceremony

This newsletter concludes with an article published in the June issue of Rotary Downunder, a magazine that goes to all Rotarians in Australia and New Zealand.

### Prospects for Quality Education Nepal

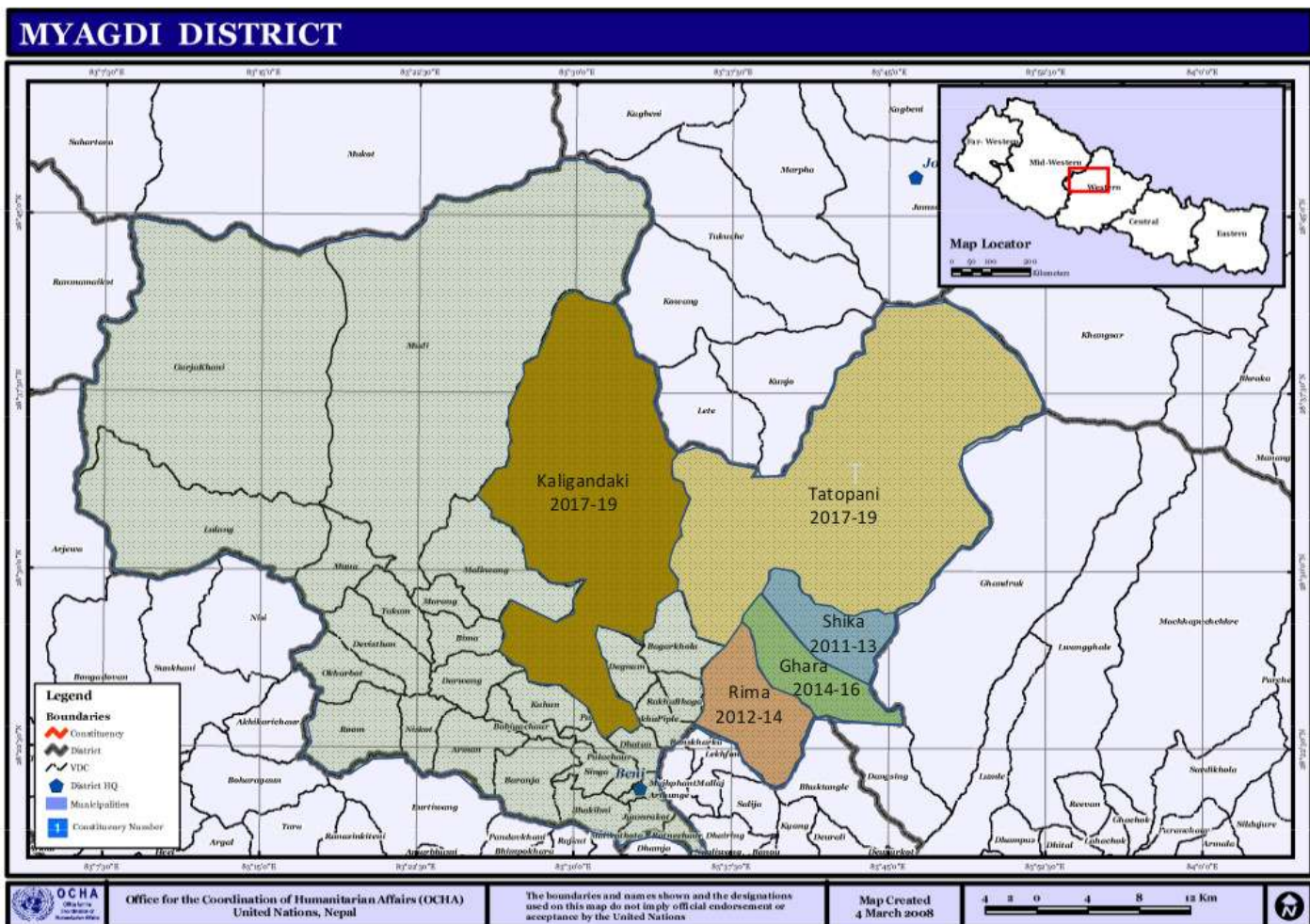
For the past several months our website has carried a graph of anticipated growth of the number of teachers in training with QEN.

We're now able to publish an update of that graph, showing that the first step has been taken with the start of the Tatopani training.

The area covered by our training is progressively extending through Myagdi District. We started with Shikha VDC in 2011, followed by Ghara and Rima in 2014. In April we added Tatopani. Being a more remote area, with schools widely scattered, it covers a greater part of the District. The same is true of Kaligandaki area which we're targeting for later this year. We typically achieve attendances of around 80% of teachers in the areas we cover. The schools in these areas are, with few exceptions, government / community schools, the more prestigious private schools being located in cities like Pokhara and Kathmandu.







## The Changing Education Scene in Nepal

When we commenced teacher training in Nepal, around two thirds of the primary teachers entering our training had ended their education at Year 10 or earlier, with many of them commencing teaching without training. Due to the efforts of Government, this situation is progressively changing. In 2012, the Government introduced a requirement that all teachers entering government employment should have completed Year 12, including some preparation for teaching. They also specified minimum training requirements.

Last year they took the next step of insisting that all teachers employed by government have a minimum of Year 12 education. This meant that many teachers had to undertake further education, or abandon teaching.

While these changes have been beneficial, they don't go far enough. They take no account of the fact that as many as a third of teachers in government schools are paid by charities and are not subject to these requirements. The training courses provided by government are limited in extent, and in many cases show lack of commitment by both trainers and teachers. By contrast, teachers attending LEARN training show very high levels of enthusiasm.

The changing circumstances were reflected in attendances at LEARN refresher training last month for both Shikha/Ghara and Rima being around 15% down on expectations. The reasons were two-fold:

- The Teachers Service Commission is preparing to appoint permanent teachers, selecting the best teachers by exam and interview. Several teachers applying for positions gave priority to preparing for the exam
- Many current temporary teachers are not willing to compete further. As they will soon be leaving their positions they are not interested in further training.

There remained, however, a solid core of teachers keen to participate. We believe our teacher training programs are needed now as much as they ever were.

That the Government supports this conclusion is evidenced by a Memorandum of Understanding recently signed with the Ministry of Education, and that local Department of Education officials participate in all of our programs.

### **How do we extend our services?**

The above graph of prospective growth looks very ambitious. Is it achievable?

We believe it is, with funding from a number of sources. The Rotary Global Grant project is the pilot for what we hope will be a series of these. Our target is another such project commencing in 2018, and two per year thereafter. We will be corresponding with our Rotary supporters seeking Clubs interested in sponsorships, large or small.

Global Grants will not cover ongoing annual Refresher Training which we consider important. Funding will come in part from income generated by our capital fund of \$800,000 from the estate of Portland Rotarian Andrew Jack (now up to \$836,000 having withdrawn net income of \$37,500 since Jan 2016). To this is added the much-appreciated contributions of our supporters including recipients of this Newsletter.

If you're in a position to make a contribution please do so now, so that we can plan our way forward. You can do so by direct deposit (Quality Education Nepal Inc., BSB 633-000, a/c 149716235), emailing us your address so that we can issue a tax-deductible receipt. Should you prefer to contribute by credit card you can do so at <http://rawcs.org.au/donate/> selecting project 43, 2009-10. Follow the instructions and you'll receive a tax-deductible receipt.

A fourth potential source of funding is accreditation as an aid agency with the Department of Foreign Affairs and Trade. Basic level accreditation would yield us \$150,000 per year for five years.

The conditions for DFAT accreditation are stringent, such that the application process is expected to take at least a year, demonstrating that all appropriate management practices are in place. We need help with this process. If you have management expertise, time available, and are willing to commit some of it to helping the people of Nepal, please get in touch by email or calling Peter on 03 5424 1453.

### **Administration of LEARN**

In our last full Newsletter we announced the appointment of Dwarika Nath Amgain as Chief Training Officer of LEARN. Dwarika proved to be a very valuable resource, teaming very effectively with Krishna Pun, CEO. Unfortunately a change in family circumstances has led to Dwarika's withdrawal. Krishna has continued very effectively in his role, supported by former CTO and current Director of LEARN Kailash Tamang on a part-time basis. Together they are sustaining the delivery of training programs.

LEARN is about to advertise for a new CTO, to be appointed in the new fiscal year.

### **Website / Logo Competition**

We are in the process of a complete make-over of our website at [www.nepalaid.org.au](http://www.nepalaid.org.au) (otherwise [www.gen.org.au](http://www.gen.org.au)), parts of which haven't changed since it was created seven years ago. We expect the new version to be online within weeks.



As part of this process we wish to establish a logo by which we can come to be recognised. Here's one possibility, but we invite suggestions for something better. Care to submit an idea?

### **In closing**

May I thank all who have shown an interest in Quality Education Nepal over the years and particularly those who have given their support, whether by donation or by participation on our Board of Directors.

I'd also like to acknowledge the Rotary Clubs and Districts that are contributing to the Global Grant project, and to Kym Stock and KB Shahi for its management.

Peter Hall  
President, Quality Education Nepal Inc.  
03 5424 1453



## Quality Education Nepal

Nepal is the poorest country outside of Africa, with education of the population the key to progress. However, the lack of teacher education presents a significant stumbling block. Tertiary education among teachers is rare, with many not even having completed Year 12.

Since 2011, Quality Education Nepal has been providing training for teachers of remote rural schools in Western Nepal to improve their skills and knowledge base. So far, 150 teachers have completed a three-year program of 50 days training, followed by annual refresher training.

The Rotary Club of Woodend, Qld, registered the program as a RAWCS project in 2009 and achieved funding in the form of a Foundation District grant of \$5000 in 2011. The public provided generous support, attracted and received through RAWCS and the tireless work of project originator and now Rotary Club of Kyneton member Peter Hall.

In March 2017, a Foundation global grant project was approved, with the Rotary Club of Portland, Vic, taking the project management role to extend the training to a further 70 teachers of Tatopani VDC in the Annapurna region, sponsored by eight clubs and three districts in Australia, and six clubs in Nepal. The first 10-day program was delivered April 9-18.

Quality Education Nepal is now seeking Rotary clubs from around the world interested in sponsoring further



global grant projects, the first to start April 2018. Our target is to have 1000 teachers in training by 2020!

Email Peter Hall at [pjthall@nepalaid.org.au](mailto:pjthall@nepalaid.org.au) to express interest or visit [nepalaid.org.au](http://nepalaid.org.au) for more information.

TOP: Training materials.  
ABOVE: The 10-day training closing ceremony, held on April 18, 2017.